

Blinds with people in mind

PALETTE

Vertical And Roller Blind Fabric Specification

PALETTE

Vertical And Roller Blind Fabric Specification

KEY FEATURES:

Fabric composition:	100% Polyester
Fire retardancy:	EN 13773 : 2003 Class 1; BS5867 - 2, Type B : 2008 for fire retardancy when tested in accordance with BS5438 : 1989
Shading:	Standard - Suitable for computer environments
Moisture resistance:	Acticide coated - Suitable for moist conditions

STANDARD SPECIFICATIONS:

Colour range:	41
Louvre widths available:	89mm (3 1/2"); 127mm (5")
Roller fabric width:	200cm (78") nominal
Typical fabric weight:	265gsm (+/- 10)
Fabric thickness:	0.35mm - nominal
Colourfast:	Conforms to BS5867 - 1 : 2004 for light fastness to Grade 6 minimum when tested in accordance with ISO 105 - B02 : 1999
Care instructions:	Wipe with damp sponge; Do not wash; Do not tumble dry; Do not dry clean; Do not iron.

COLOUR	HEAT		LIGHT		S-C
	T	R	T	R	
Atlantic Blue	7%	29%	0%	9%	0.63
Barley	15%	53%	5%	41%	0.43
Beige	17%	62%	15%	70%	0.35
Black	0%	5%	0%	6%	0.83
Blue	13%	51%	4%	40%	0.44
Blue Grass	10%	46%	2%	34%	0.48
Blush	13%	45%	3%	19%	0.49
Burnt Orange	15%	60%	11%	62%	0.37
Candy Pink	14%	52%	7%	48%	0.43
Concrete	1%	18%	0%	18%	0.71
Copper	9%	35%	0%	11%	0.58
Cream	19%	65%	17%	73%	0.33
Dark Blue	0%	5%	0%	6%	0.82
Denim	4%	30%	0%	20%	0.61
Espresso	0%	6%	0%	6%	0.82
Fern	7%	42%	3%	43%	0.51
Fresh Apple	13%	59%	10%	63%	0.37
Fudge	1%	16%	0%	15%	0.73
Green	7%	41%	3%	41%	0.52
Hessian	13%	59%	10%	57%	0.37
Iron	10%	51%	7%	54%	0.44
Lemon	16%	60%	10%	57%	0.37
Lime Green	9%	45%	3%	42%	0.49
Magnolia	13%	59%	10%	63%	0.37
Muted Gold	10%	46%	3%	40%	0.48
Olive Haze	9%	45%	3%	42%	0.49
Plum	1%	19%	0%	11%	0.71
Raspberry Mist	14%	58%	5%	48%	0.38
Redcurrant	13%	45%	1%	16%	0.49
Roasted Red	14%	55%	5%	41%	0.41
Rosebud	14%	55%	10%	60%	0.41
Sand	7%	42%	3%	43%	0.51
Sea Blue	14%	52%	7%	48%	0.43
Sky	16%	60%	10%	57%	0.37
Smokey Blue	14%	58%	10%	60%	0.38
Soft Pink	19%	65%	17%	73%	0.33
Soft Truffle	7%	42%	3%	43%	0.51
Stone Grey	10%	51%	7%	54%	0.44
Teal	10%	46%	2%	34%	0.48
Violet	14%	58%	5%	48%	0.38
White	21%	69%	20%	78%	0.30

This data is based on:
Tests conducted using double glazed 6mm float glass with 12mm air space. Blinds are fully closed.

Shading Co-efficients are calculated for radiation at normal incidence. Standard U value is 2.75 W/M 2k = 0.49Btu/ft2hx°F.

Important: Performance data has been compiled with great care using the latest techniques. However, it is advisable to check actual suitability of fabrics for a particular application before use.

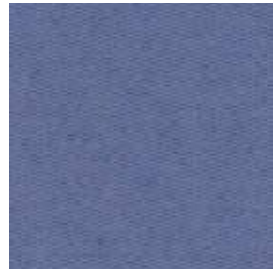
In line with our commitment to product development, specifications may be subject to change without notice.

PALETTE

Vertical And Roller Blind Fabric Specification



unix[®]
project blind collection



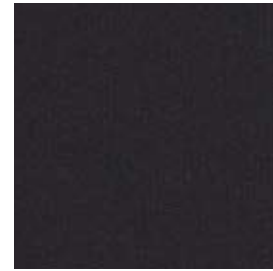
Atlantic Blue



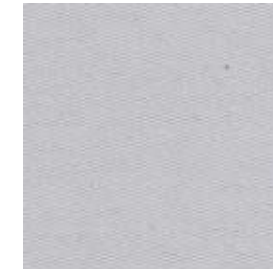
Barley



Beige



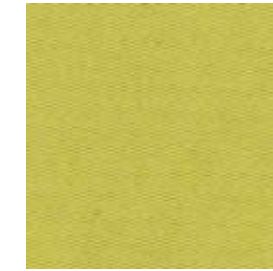
Black



Iron



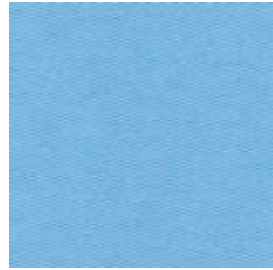
Lemon



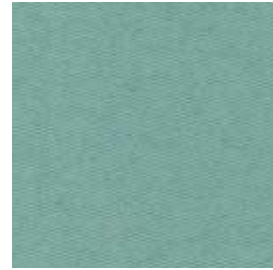
Lime Green



Magnolia



Blue



Blue Grass



Blush



Burnt Orange



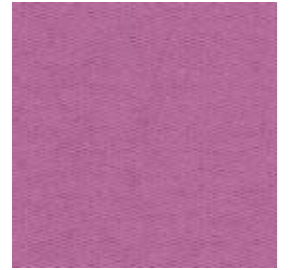
Muted Gold



Olive Haze



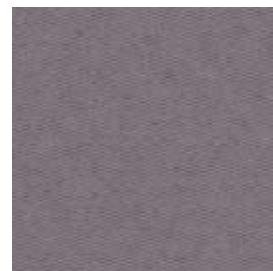
Plum



Raspberry Mist



Candy Pink



Concrete



Copper



Cream



Redcurrant



Roasted Red



Rosebud



Sand



Dark Blue



Denim



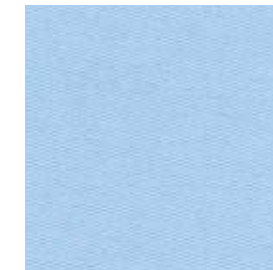
Espresso



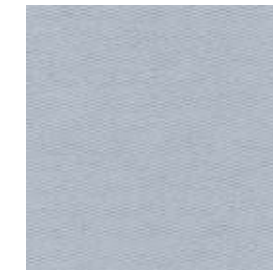
Fern



Sea Blue



Sky



Smokey Blue



Soft Pink



Fresh Apple



Fudge



Green



Hessian



Soft Truffle



Stone Grey



Teal



Violet



White

